



**SOLVAY**

asking more from chemistry®



# Hyflon® PFA

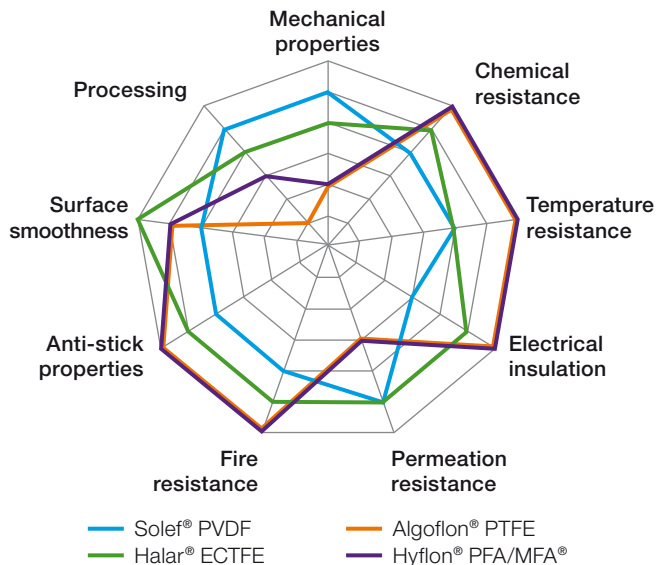
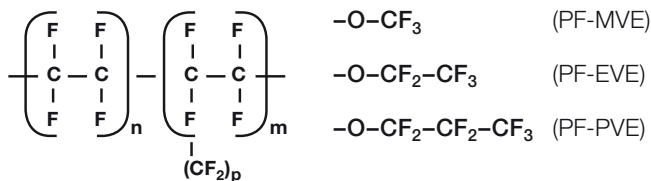
for Flue Gas Heat Exchanger Application

**SPECIALTY  
POLYMERS**

# Hyflon® PFA

Hyflon® PFA is the range of melt processable perfluoroalkoxy (PFA) fluorocarbon resins specifically designed for high temperature service and virtually universal chemical resistance.

Hyflon® PFA is a co-polymer of TFE and PPVE. It has been widely used for pressure tube of flue gas heat exchanger for more than 30 years.



## Hyflon® PFA and Hyflon® MFA® melt-processing grades

Grade	PFA P430	PFA P120X	PFA P125X	PFA M620	MFA® F1520
MFI [372 °C, 5 kg]	5	3.5	2	3	2
Melting point [°C]	305	314	314	285	270
ASTM D3307 classification	Type II	Type II	Type II	Type VII	Type X
Max. continuous use temperature	260	260+	260+	250	225

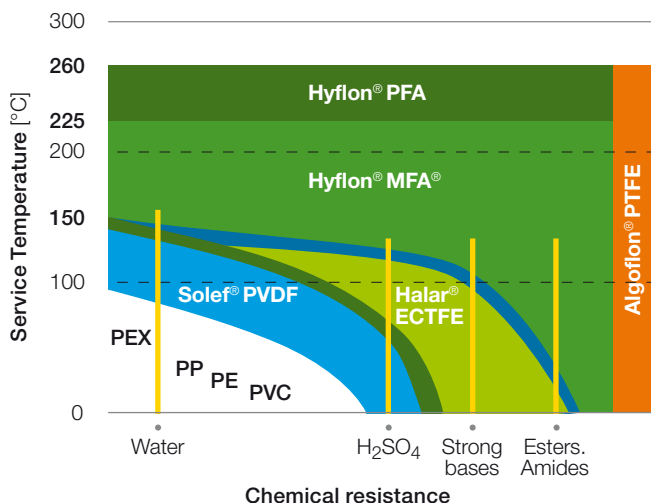
## Hyflon® PFA Typical Properties

Similar molecular structure as PTFE with additional side-groups to reduce melt viscosity and it's melt processable.

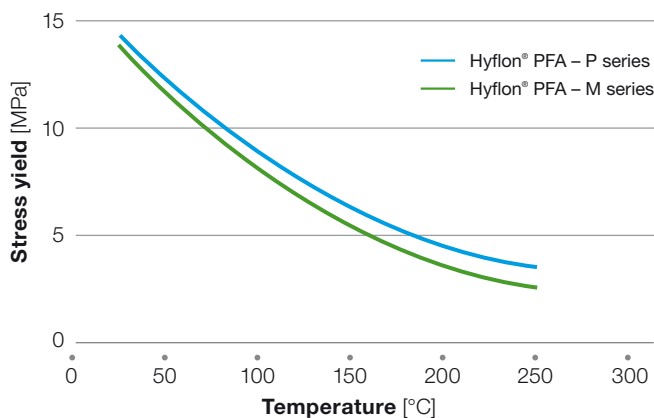
- Continuous use temperature is up to 260 °C
- Broadest chemical resistance among thermoplastics
- Best-in-class thermo-mechanical properties among thermoplastic perfluoropolymers



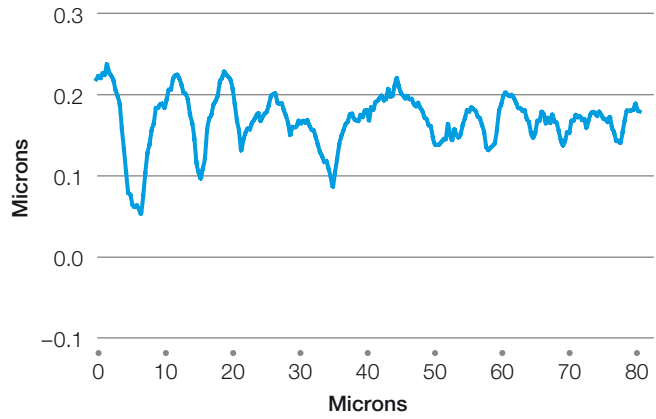
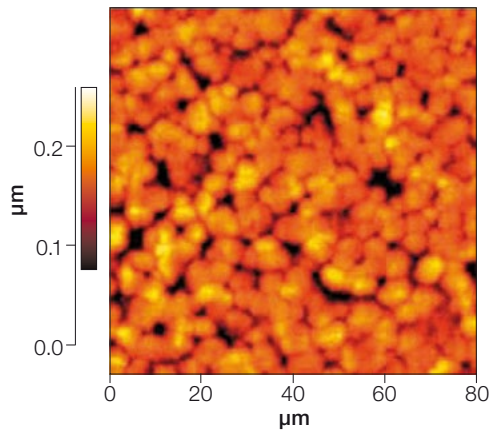
## Hyflon® PFA chemical resistance



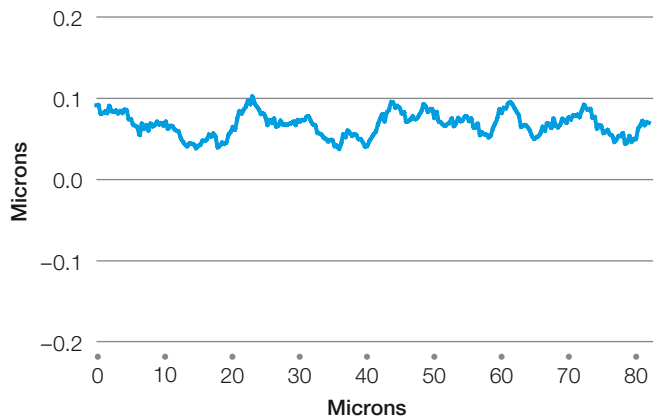
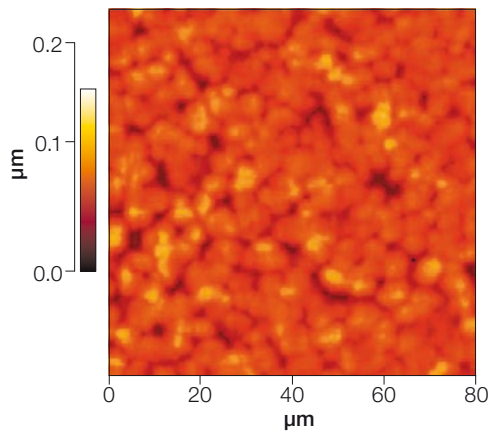
## Hyflon® PFA stress at yield vs. temperature



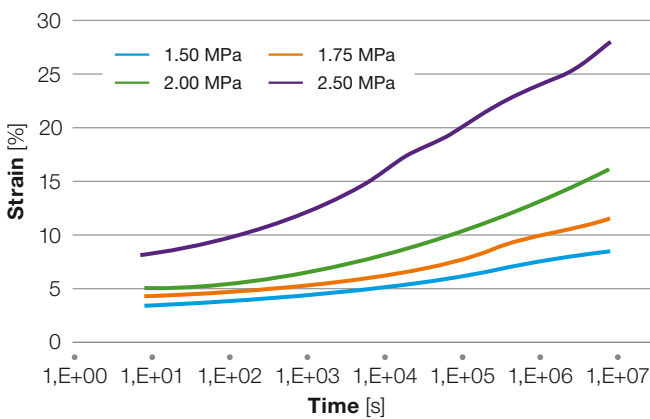
### Hyflon® PFA P series surface smoothness by AFM



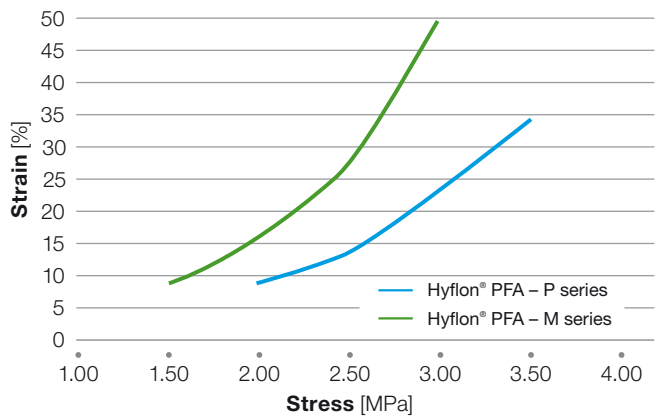
### Hyflon® PFA M series surface smoothness by AFM



### Tensile creep curves at 200°C, Hyflon® PFA M620



### Isochronous stress-strain curves for a 2,000 hour creep time at 200 °C



More technical information, please contact with the technical people of Solvay.



## Specialty Polymers

### Worldwide Headquarters

**SpecialtyPolymers.EMEA@solvay.com**

Viale Lombardia, 20  
20021 Bollate (MI), Italy

### Americas Headquarters

**SpecialtyPolymers.Americas@solvay.com**

4500 McGinnis Ferry Road  
Alpharetta, GA 30005, USA

### Asia Headquarters

**SpecialtyPolymers.Asia@solvay.com**

No.3966 Jindu Road  
Shanghai, China 201108

[www.solvay.com](http://www.solvay.com)

Safety Data Sheets (SDS) are available by emailing us or contacting your sales representative. Always consult the appropriate SDS before using any of our products.

Neither Solvay Specialty Polymers nor any of its affiliates makes any warranty, express or implied, including merchantability or fitness for use, or accepts any liability in connection with this product, related information or its use. Some applications of which Solvay's products may be proposed to be used are regulated or restricted by applicable laws and regulations or by national or international standards and in some cases by Solvay's recommendation, including applications of food/feed, water treatment, medical, pharmaceuticals, and personal care. Only products designated as part of the Solviva® family of biomaterials may be considered as candidates for use in implantable medical devices. The user alone must finally determine suitability of any information or products for any contemplated use in compliance with applicable law, the manner of use and whether any patents are infringed. The information and the products are for use by technically skilled persons at their own discretion and risk and does not relate to the use of this product in combination with any other substance or any other process. This is not a license under any patent or other proprietary right.

All trademarks and registered trademarks are property of the companies that comprise the Solvay Group or their respective owners.  
© 2016, Solvay Specialty Polymers. All rights reserved. D 11/2016 | Version 1.0 Brochure design by ahlersheinel.com