

Supersol[®] Lubricants

Wet drawing lubricants
for brass coated steel wires



SOLVAY

asking more from chemistry[®]

Final Applications

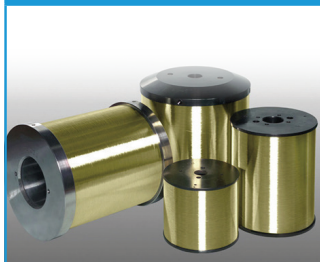
Steel cord for tire reinforcement



Hose wire



Sawing wire



Key benefits

- ▶ **High lubrication performance** => drawing process productivity
 - reduced dies wear
 - reduced wire breakage ratio
- ▶ **Cord surface/rubber adhesion** => tires safety and durability requirements
- ▶ **Low corrosivity**
- ▶ **Low foam formation**
- ▶ **Easy handling and diluting steps**
- ▶ **Compliance with all local regulations**

A Strong Technical Service Network

- ▶ Solvay Technical Service teams are geographically close to customers

- ▶ Technical Service mainly consists in:

- Drawing bath follow-up (chemical analysis)
- Customized lubricant management recommendations
- Wire surface characterization (XPS spectrometry and electronic microscopy)



Supersol[®] Range

Emulsion lubricant	Dispersion lubricant	Stranding oil
Supersol [®] ADM Supersol [®] ADM-M Supersol [®] ADM-B Supersol [®] ADM-U / ADM-U V2 Supersol [®] TS4000	Supersol [®] FP Supersol [®] TCB-C	Additif TO



North America

Phone: +1-888-776-7337
 Phone: +1-609-860-4000
 novocareCC@solvay.com

Europe-France

Phone: +33 (0) 1 53 56 50 00
 produit.info@solvay.com

Asia Pacific

Phone: +65 - 6291 1921
 novocare_info@solvay.com

Latin America

Phone: + 55 11 37 47 7886
 solvay.info@solvay.com

www.solvay.com